

MONTHLY MEMBERSHIP PROGRESS REPORT

LOCATION KENYA AFRICA

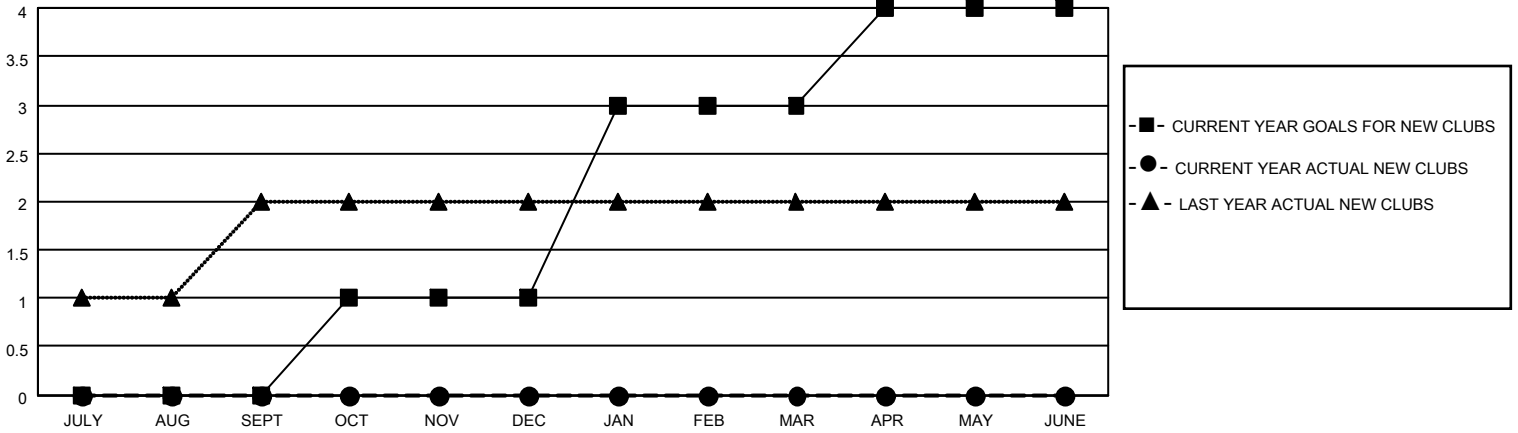
District 411 A

Results as of: 7/31/2021

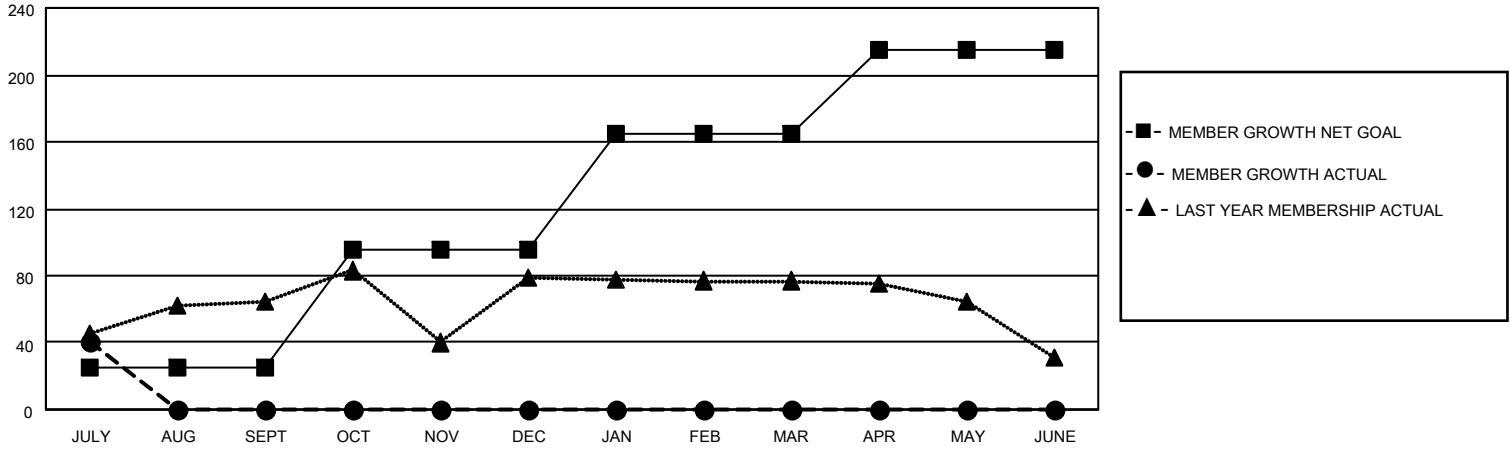
Clubs			
RESULTS FOR 2021-2022			
QUARTER	NEW CLUB GOAL	NEW CLUBS	DROPPED CLUBS
JULY/AUG/SEPT	0	0	0
OCT/NOV/DEC	1	0	0
JAN/FEB/MAR	2	0	0
APR/MAY/JUNE	1	0	0

Members			
RESULTS FOR 2021-2022			
QUARTER	MEMBER GROWTH NET GOAL	MEMBER GROWTH ACTUAL	DROPPED MEMBERS ACTUAL (including transfers)
JULY/AUG/SEPT	25	46	4
OCT/NOV/DEC	70	0	0
JAN/FEB/MAR	70	0	0
APR/MAY/JUNE	50	0	0

GOALS AND ACTUAL NEW CLUBS CUMULATIVE



GOALS AND ACTUAL MEMBERS CUMULATIVE



DROPPED CLUBS: 0	
<u>DROPPED MEMBERS</u>	
DECEASED	1
CLUB CANCELLED	0
OTHER	3
TOTAL	4

11 CLUBS OF 65 ADDED 1 OR MORE NEW MEMBERS

<u>GENDER DISTRIBUTION</u>	
MALE	971 (60.54%)
FEMALE	633 (39.46%)

[CLICK HERE FOR CUMULATIVE MEMBERSHIP DATA](#)

TOTAL FAMILY UNIT MEMBERS	355
FAMILY MEMBERS PAYING HALF DUES	195